

**NEW Features only available with GT 560**

### Moisture Sensor

**Accurate, Reliable and Easy to Install**

- Installed in a location that experiences continuous grain flow during unloading.
- Temperature compensated to provide improved accuracy from summer to winter harvests.
- Preset calibrations for each different command
- Ability to adjust calibrations to match local varieties and conditions.
- The GT 560 will display moisture percentage and calculated dry bushels when a valid signal is present from the moisture sensor.
- Harvest Tracker Software will show the moisture percentage and dry bushel information as shown below



### AutoLog<sup>TM</sup> 2

**AutoLog<sup>TM</sup> 2 Automatic Start/Stop Function**  
(patent pending)

- No Load Records lost due to forgetting to press Start•Stop button. Allows Grain Cart operator to focus on loading the truck
- AutoLog<sup>TM</sup> 2 allows operator to preset target weight and signals when to close the grain door to prevent over-loading and spills
- Truck capacity function sounds alarms when capacity is reached

### GPS Location

**Monitor Your Location**

- Latitude and Longitude is recorded with a "Puck" Antenna
- The GT 560 monitors the location of the system during loading and unloading
- Harvest Tracker software, both PC and On-Line, will show and export the latitude and longitude information and will display the Loading and Unloading locations in an integrated Google Map.

### Harvest Tracker<sup>TM</sup> APP

**GT 560 Functionality on a Smartphone or Tablet**

- Easily view and control GT 560 scale indicator remotely from Android and iOS phone or tablet
- View weights, initiate check combine function, and edit field names from the combine
- Available free-of-charge from Play Store or App Store with purchase of Digi-Star ERM-WiFi.



## Functionality by Levels

**NEW**

Harvest Tracker Model	GT 400	GT 465	GT 560
Backlit LCD Single Line Display	x	x	
Backlit LCD Quad Line Display		(On Universal Terminal)	x
Designed for <b>ISOBUS</b> UT Display applications		x	
Internal Record Storage		x	x
External Record Storage Option	x		
External Printer Option	x		x
EZ Setup & Calibration using Direct Access Numbers		x	x
AutoLog <sub>2</sub> (See details in brochure)		x	x
Large Multi-Line Display		(On Universal Terminal)	x
QWERTY Keyboard and Navigation Keys		(On Universal Terminal)	x
Check Combine Function to Calibrate Yield Monitor		x	x
Short Field Names with Basic Entry	x		
Long Field Names with EZ Entry		x	x
Truck ID and Truck Capacity Settings		x	x
USB Load Record Transfer (including: Weight, Field Name, Truck ID, Date & Time)		x	x
Harvest Tracker PC Software		x	x
Displays weight with: Start-Stop Loading, Field, and Zero functions	x	x	x
ERM-WIFI Capable (Option)			x
Harvest Tracker App (Standard with ERM-WIFI)			x
Harvest Tracker On-Line (First Year Free with ERM WIFI)			x



## COMPLETE HARVEST DATA SOLUTION

**AUTOMATIC | RECORD | MANAGE**



For more information visit [digi-star.com](http://digi-star.com)  
or call 1-800-225-7695 • 1-920-563-1400

**DIGI★STAR**  
TOPCON POSITIONING GROUP

We reserve the right to modify designs or implement product improvements without any obligations with respect to goods purchased. Touch Screen Technology™ and Moisture Tracker™ (Patent Pending) are registered trademarks of DigiStar LLC. D3830-0116 © 2016 DigiStar Harvest Tracker



**Harvest Tracker<sup>TM</sup>**

**DIGI★STAR**  
TOPCON POSITIONING GROUP

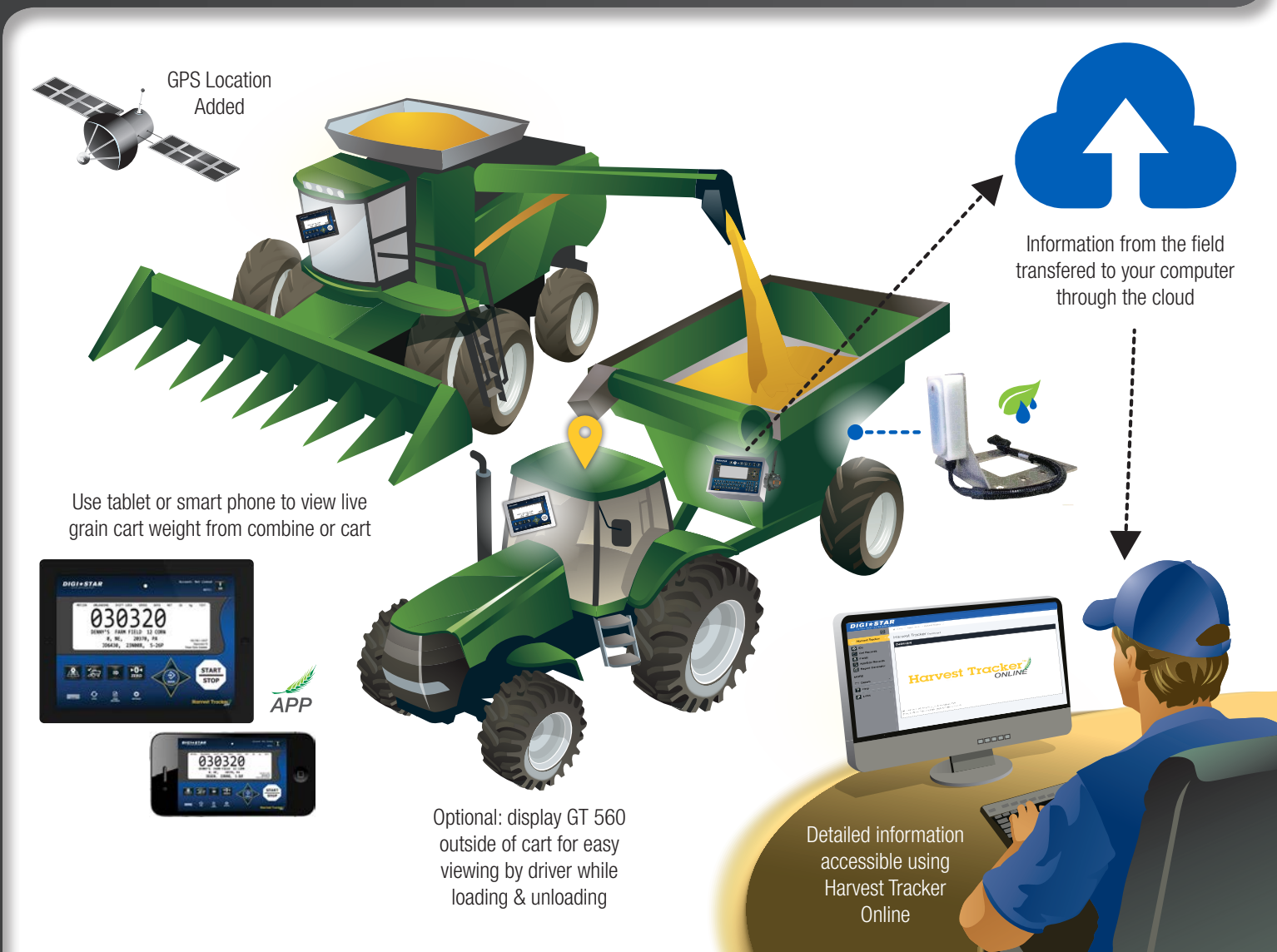


## Precision Field Management Solutions

Harvest Tracker™ is a full-featured grain cart interface system that provides significant field recording and management benefits for producers and custom harvesters.

The Harvest Tracker precision automated management system allows easy download of collected data via USB device or the Cloud. Proprietary software easily installed on a PC captures the recorded data and organizes it into reports in excel or PDF-format.

Harvest Tracker is easy-to-use and with AutoLog™<sub>2</sub> there are no missed loads, you have full control of the system.



### Unique Data Management

- Allows you to quickly manage your harvest process
- Gives you the tools to analyze your data and make changes for future crops

### Operator Control

- Empower your team by providing ease of use and accuracy
- With AutoLog™<sub>2</sub> there are no missed loads, you have full control of the system

Precision harvest data systems designed for your operation.

**NEW**



### GT 560 - Full Access System

- Automatic Load Record with AutoLog™<sub>2</sub>
- Quick viewing of last load and current status via large multi-line display
- Easy to edit load information with QWERTY keyboard and navigational keys
- Simplified reporting with time/date stamp data verification
- Accumulation of weights per field entry
- Transfer of field names and truck ID from PC to indicator and back via USB
- GPS location loading and unloading
- Moisture, know dry bushels out of each field

Unlike other systems, your records are always collected with our internal memory.



### GT 465 - ISOBUS System

Compatible with leading virtual ISOBUS terminals in agriculture

- Decrease cab clutter
- Provides same functionality as GT 460 on ISOBUS virtual terminal display

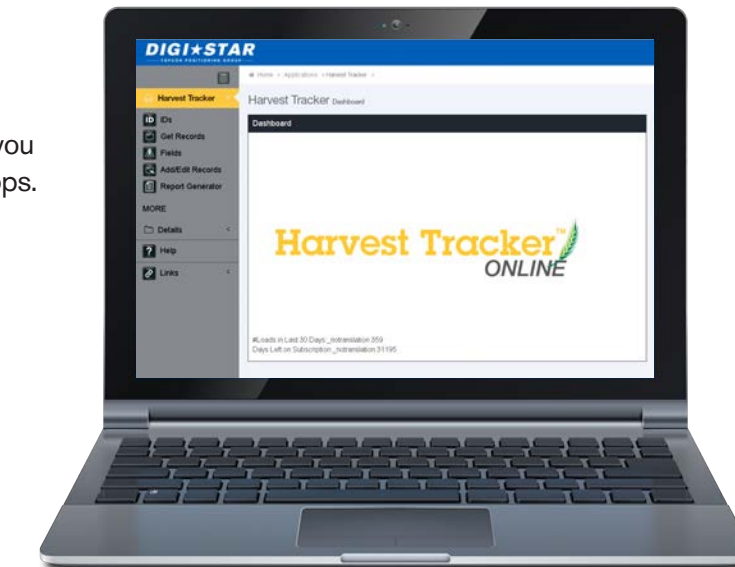
### Harvest Tracker Software

Harvest Tracker offers a precision automated management system designed specifically for grain cart applications and allows you to quickly manage your harvest process and gives you the tools to analyse your data and make changes for future crops.

The reports are easy to use to verify harvest production. You also have supportive data for loss records.

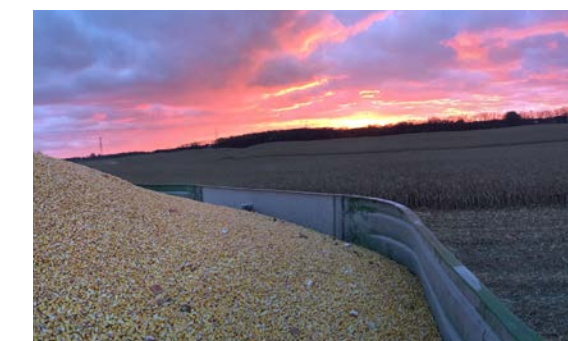
### Harvest Tracker Online

- Harvest records are now available anywhere and on any device you have internet access
- Final load data is available before the harvest crew leaves the field
- All the features of Harvest Tracker available online



ID	Date/Time	Wt	Field	Moist	LoadLat	LoadL	LoadLng	LoadL	UnLoadLat	UnLoac	UnLoadLng	UnLo	Crop	DryWt	DryBushels
CHEVY	1/27/2016 9:12 AM	49530	WEIGH COMBINE GRAIN	0	4256.0796	N	8848.5061	W	4256.0796	N	8848.5061	W	WHEAT	49530	949
CHEVY	1/27/2016 9:14 AM	-33760	FRONT 40	28.7	4256.0796	N	8848.5061	W	4256.0796	N	8848.5061	W	WHEAT	24078	461
CHEVY	1/27/2016 9:17 AM	-15790	FRONT 40	25.1	4256.0796	N	8848.5061	W	4256.0796	N	8848.5061	W	WHEAT	11822	226
CHEVY	1/27/2016 9:40 AM	-22240	FRONT 40	19.9	4256.0796	N	8848.5061	W	4256.0796	N	8848.5061	W	SOY	11817	341
CHEVY	1/27/2016 9:42 AM	-27290	FRONT 40	18.4	4256.0796	N	8848.5061	W	4256.0796	N	8848.5061	W	SOY	22272	427
CHEVY	1/27/2016 9:50 AM	-15030	FRONT 40	18.2	4256.0796	N	8848.5061	W	4256.0796	N	8848.5061	W	SOY	12289	235
CHEVY	1/27/2016 9:52 AM	-15080	FRONT 40	18.2	4256.0796	N	8848.5061	W	4256.0796	N	8848.5061	W	SOY	12330	236
CHEVY	1/27/2016 9:53 AM	-12780	BACK 40	23	4256.0796	N	8848.5061	W	4256.0796	N	8848.5061	W	OATS	9844	354
FORD	1/27/2016 9:55 AM	-14620	BACK 40	23	4256.0796	N	8848.5061	W	4256.0796	N	8848.5061	W	OATS	11261	404

Insurance adjusters like using reports from Digi-Star's Harvest Tracker Software. The reports are easy to use to verify harvest production, so you have supportive data for loss records.



### Harvest Tracker™ BENEFITS:

- Generate reports in multiple formats
- Compare harvest data from field-to-field
- Preload field names, truck ID's, and truck capacity to save time in the field
- Each load record shows a time/date stamp
- Automatically ignores duplicate records
- Easy-to-use report options
- Stores check combine records to correct field maps post harvest
- USB load record and data transfer from indicator to PC